

## Manchester Household Hazardous Waste Collection

321 Olcott Street  
Manchester, CT  
860-647-3257

### AN APPOINTMENT IS MANDATORY



Scan the QR code or go to the website (below) to set up an appointment for HHW and to see a complete list of acceptable and non-acceptable items.

<https://mdjdmz.townofmanchester.org/WasteAppointments/>



### Town of Somers Recycling Center PaintCare

First Saturday of the Month  
April thru October

#### Accepted PaintCare Products

- ✦ Interior and exterior paints: latex, acrylic, water-based, alkyd, oil-based, enamel (including textured coatings)
- ✦ Deck coatings, floor paints (including elastomeric)
- ✦ Primers, sealers, undercoating, & stains
- ✦ Shellacs, lacquers, varnishes, urethanes (single component)
- ✦ Waterproofing concrete, masonry, wood sealers (not tar or bitumen-based)

#### NOT Accepted PaintCare Products

- ✦ Caulk, epoxy, glues, adhesives
- ✦ Paint thinners, mineral spirits, solvents
- ✦ Aerosol paints (spray cans)
- ✦ Auto and marine paints
- ✦ Art and craft paints
- ✦ Caulk, epoxy, glues, adhesives
- ✦ Paint additives, colorants, tints, resins
- ✦ Wood preservatives-containing pesticides
- ✦ Roof patch, asphalt, tar, and bitumen-based products
- ✦ 2-component coatings
- ✦ Deck cleaners
- ✦ Traffic and road marking paints
- ✦ Industrial Maintenance coatings
- ✦ Original Equipment Manufacturer (OEM) shop application paints/finishes

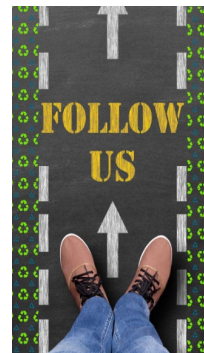
# SOMERS RECYCLING CENTER

127 Egypt Road  
Somers, CT 06071  
(860) 763-8214

#### Hours

Monday 7:30-4:00  
Thursday 7:30-4:00  
Saturday 7:30-4:00  
Sunday 11:30-4:00

Closed holidays and for inclement weather. Closures announced on Town Website, and Somers Public Works Facebook page.



Facebook

<https://www.facebook.com/SomersPW/>



Website

<https://www.somersct.gov/town-departments/public-works-department>



#### Contact Us

93 Egypt Road (DPW)  
Somers, CT 06071  
Phone 860.763.8234

Email [kowren@somersct.gov](mailto:kowren@somersct.gov)

Web: <https://www.somersct.gov>

## SOMERS RECYCLING CENTER MAP



### Can I Recycle It Look Up Tool

This lookup tool is important to Somers residents as it is specifically tailored for our town's needs. It helps residents understand what is accepted at the Recycling Center as well as for curbside pickup of Municipal Solid Waste (MSW) and Single Stream Recycling. Created by our waste hauler, USA Hauling, this tool provides a convenient way to ensure that all waste disposal and recycling practices are correctly followed in Somers. Now, you have a resource that simplifies the process of proper waste management, making it easier for everyone in the community to contribute to a cleaner, more sustainable environment.

To use this new tool log onto:

**USAREcycling.com**

Then in the upper right-hand corner click Learning Center then scroll down.



#### CAN I RECYCLE IT?

Paint, mattresses, electronics, clothing, furniture, and even hazardous waste has a place.

Not sure what to do with the items that don't go into your bin? We can help you find the most convenient way to dispose of them in your area through our search engine tool below.

Can I Recycle It?

Type the name of a waste item and we'll tell you how to recycle or dispose of it.

Featured Searches

- Styrofoam
- Pizza box
- Plastic plant pots, trays
- Plastic takeout container - black

Privacy / Terms of Service / Contact Us

Powered by iThru

## SINGLE STREAM RECYCLING CONTINUED

Map Location

**Paper & Cardboard (empty & flatten)**

#3

#### Acceptable

- ✓ Printer paper
- ✓ Envelopes
- ✓ Paper bags
- ✓ Mail, junk mail, and mail inserts
- ✓ Newspapers and magazines
- ✓ Catalogs, phone books & brochures
- ✓ Paperback books
- ✓ Cardboard
- ✓ Cardboard egg cartons
- ✓ Milk & juice cartons (Aseptic Cartons)
- ✓ Cereal & pasta boxes
- ✓ Pizza boxes (clean no grease)



#### Unacceptable

- ✗ Gift Wrap, tissue paper & gift bags
- ✗ Styrofoam
- ✗ Paper cups (hot & cold)
- ✗ Shredded paper
- ✗ Ice Cream cartons (no longer accepted)

Map Location

**Glass**

#3

#### Acceptable

- ✓ Beverage bottles & jars
- ✓ Food bottles & jars



#### Unacceptable

- ✗ Ceramic mugs & plates
- ✗ Drinking glasses

## SINGLE STREAM RECYCLING

Map Location

**Plastic**

#3

### Acceptable



**ALL ITEMS MUST  
BE EMPTY AND  
RINSED**

- ✓ Plastic bottles (with or without caps attached)
- ✓ Plastic containers, tubs & lids
- ✓ Plastic one-use cups (no lids, no straws)
- ✓ Green, white, red planter pots (no dirt or plant)
- ✓ Egg Cartons (plastic & cardboard)



### Unacceptable

- ✗ Prescription bottles and loose bottle caps
- ✗ Black plastic planter pots or trays
- ✗ Plastic bags & wrap
- ✗ Plastic plates, bowls & utensils
- ✗ Single-use coffee containers
- ✗ Styrofoam cups, containers & packaging peanuts

Map Location

**Metal**

#3

### Acceptable

- ✓ Aerosol containers (food grade only that are empty)
- ✓ Aluminum foil
- ✓ Cans & bottles
- ✓ Foil containers
- ✓ Metal lids from cans & bottles



### Unacceptable

- ✗ Aerosol containers (deodorizers, cleaners, pesticides, etc.)
- ✗ Foil tops from yogurt containers
- ✗ Paint cans
- ✗ Pots & pans
- ✗ Small pieces of scrap metal
- ✗ Spiral wound containers

## Somers Food Waste Recycling Program

Connecticut is confronting a waste management crisis: the closure of the MIRA trash plant in Hartford has created a significant gap in the state's waste disposal system, leading to Connecticut's garbage being sent out of state. A state proposal now advocates for waste reduction, partly through the implementation of statewide composting and food waste diversion.

The Town of Somers is addressing this with a Food Waste Collection Program for all residents. This program aims to divert food waste from our household waste, which will save money for the town and residents but also converts organic materials into clean, renewable energy. Vanguard Renewables and Quantum Biopower are the companies designated to process our food waste. For details on how they transform food waste into energy, please refer to their respective websites.

Vanguard Renewables: <https://www.vanguardrenewables.com/>

Quantum Biopower: <https://quantumbiopower.com/index.htm>



The Town of  
**Somers**  
Connecticut

# Food Waste Recycling Program



**JOIN US**

Manage food waste sustainably with our recycling program. Participate in transforming your food scraps into energy with our initiative to support a greener environment. By producing clean energy along with minimizing food waste, you can contribute positively to the environment.

✓ Sustainable waste solution and reduction from costly household trash.

✓ Food waste is recycled and processed into renewable energy.

Methods to Register:

- Scan the code using your phone or tablet camera.
- Call or follow the provided link.



<https://forms.office.com/r/BhA8BX8d7L>



860-563-3234



## Items Accepted at the Somers Recycling Center

Map Location	<i><b>FREE with an annual permit</b></i>
#1	✓ Household Trash (what comes from your kitchen, bathroom, and laundry rooms)
#2	✓ Redemption Bottles/Cans (Boy Scouts)
#3	✓ Single Stream Recycling (see single stream recycling)
#4	✓ Cardboard (broken down and flattened)
#5	✓ Brush, shrubs, and branches
#6	✓ Food Waste
#7	✓ Mercury Thermostats ✓ Cooking Oil, grease, and fat
#9	✓ Scrap Metal
#10	✓ Ash Pile
#13	✓ Mattresses – coil/foam ( <b>No</b> toppers) & box springs
#14	✓ Microwaves, toasters, & small appliances ✓ Air Conditioners, Dehumidifiers & Humidifiers ✓ Non-Rechargeable & Rechargeable Batteries ✓ Fluorescent bulbs & Household light bulbs ✓ Computers, Monitors, Keyboards, Printers Scanners, fax machines. ✓ Cameras, Telephone & Cell Phones ✓ Televisions, VCRs, and DVD players ✓ Stereo & Video Game Equipment ✓ iPods/PDAs, Tablets/E-Books

## Items Accepted at the Somers Recycling Center

Map Location	<i><b>FREE with an annual permit continued</b></i>
#15	✓ Sharing Shed (Gently Used Items)
#16	✓ Furniture Shed (Open selected weekends)
#17	✓ Scale for weighing all bulky waste-couches/sofas
#18	✓ Paintcare Shed (First Saturday - April through October)
#19	✓ Hartsprings Donation Bin
#20	✓ Leaves (bagged/loose) <b>NO</b> grass or kitty litter ✓ Potted plants – pots removed and disposed of
Map Location	<i><b>Bulky Waste \$200/ton</b></i>
#11	➤ Furniture (wood, plastic, upholstered, futons, etc.) ➤ Pallets, wood fencing & scrap wood ➤ Construction, business, and home debris: drywall, cabinets, asphalt, shingles, fiberglass, shelving, lumber, tile, and large quantities of blinds, plastics, styrofoam, mixed media containers ➤ Soiled, torn, rodent infested mattresses, toppers and bedding ➤ Garden hoses, kids outdoor plastic playsets, and pools ➤ Empty automotive and machinery containers (oil, hydraulic fluid, antifreeze, gasoline etc.)
#12	➤ Sofas & Carpets
Map Location	<i><b>Waste with a <u>FEE</u></b></i>
#12	➤ Rugs (depending on size) \$5.00
#8	➤ Auto Tire \$5.00 ➤ Truck Tire \$10.00 ➤ Tractor Tire \$50.00
#7	➤ Auto Battery \$5.00